

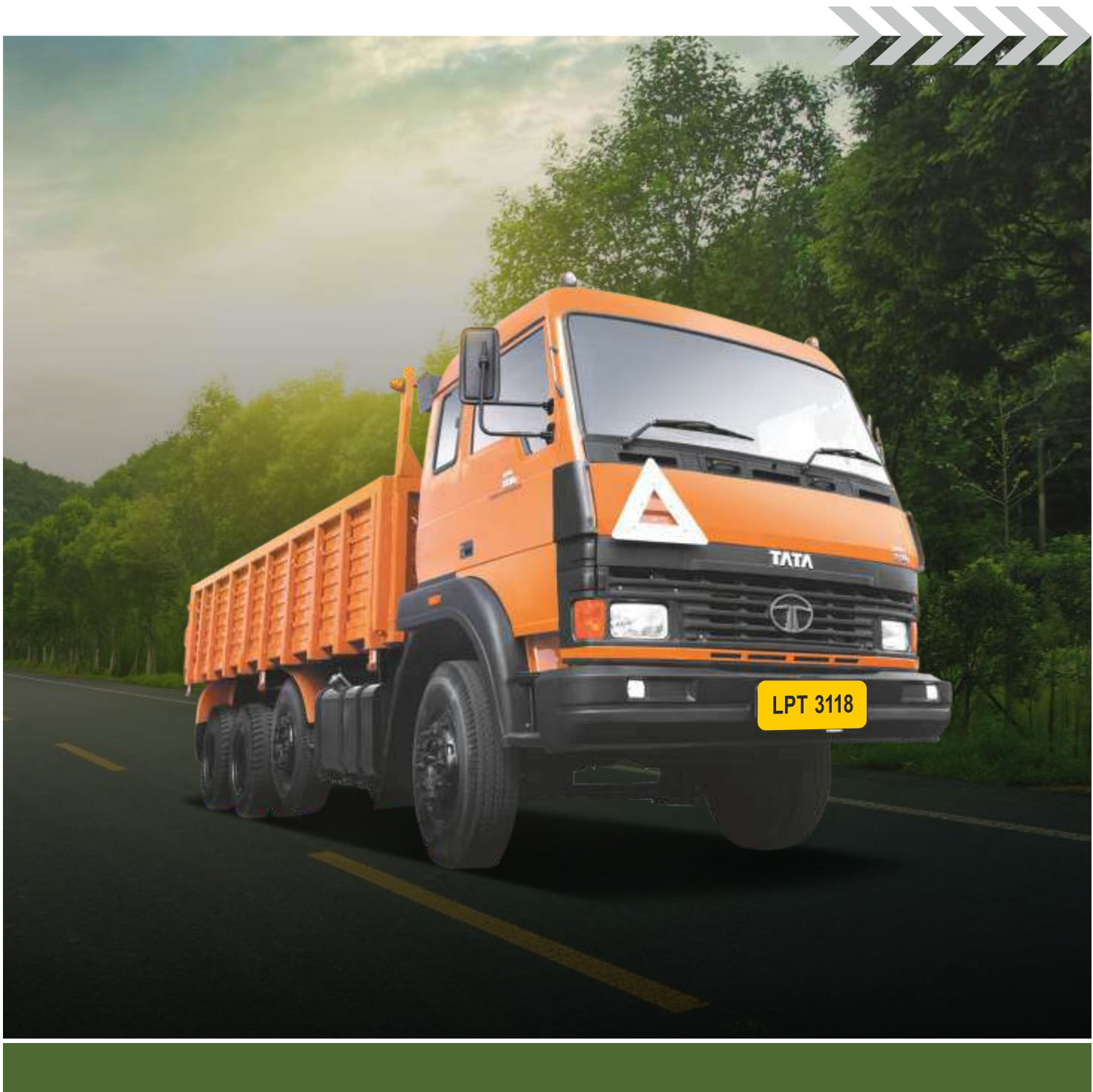
**TATA MOTORS**

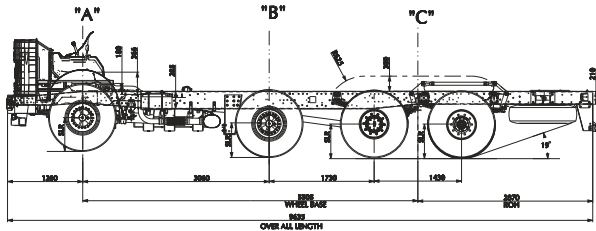


# LPT 3118

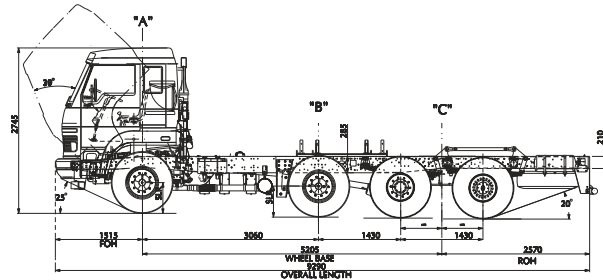
## BSIII

Most Reliable & Economical Partner

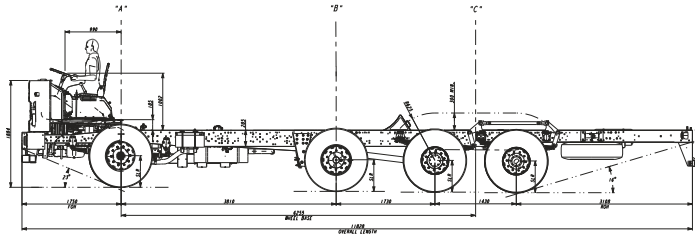




LPT 3118 with 56 wheel base



LPT 3118 with 52 wheel base



LPT 3118 with 62 wheel base

All dimensions in mm

Engine	
Model	Cummins 6BT 5.9 180 BSIII
Type	Water-cooled Direct Injection Turbo-charged, Diesel Engine; 6 Inline
Other Details	Bore / Stroke: 102 mm x 120 mm Firing Order: 1-5-3-6-2-4 Air Filter: Dry type remote mounted Oil Filter: Full flow spin on paper type Fuel Filter: Pre and Fine Filtration with Water Separator
Volume	5883 cc
Power	181 HP @ 2500 rpm
Torque	675 Nm @ 1400-1600 rpm
Cabin/Cowl and Steering	
Type	Cowl / All Steel Hydraulic Tilt Cabin
Steering	Hydraulic Power-assisted
Instrument Cluster	Analog
AC	Not available
Brake	
Type	Dual Circuit, Full Air S-Cam Brake System
Tyres	
Tyres	10R20 - 16PR
Fuel Tank (Itrs)	
Fuel Tank	Rect. 400
Performance	
Max. Geared Speed in Top Gear (kmph)	80
Max. Gradeability in Crawler Gear	22%
Telematics/GPS Tracking	
Unit available as optional Service activation optional (Contact 1800 209 7979)	

Dimensions (mm)						
Overall Width	2440					
	Cowl	Cab	Cowl	Cab	Cowl	Cowl
Wheelbase	5205		5505		6255	5905
Front Overhang	1260	1515	1260	1515	3108	1260
Overall Length	9035	9290	9635	9890	11828	10385
Turning Circle Diameter	19900		21500		21960	22360
Weight						
Wheelbase (mm)	Cowl	Cab	Cowl	Cab	Cowl	Cowl
	5205		5505		6255	5905
Unladen Weight (kg)	7300	7750	7400	7850	7750	7480
Max. GVW (kg)	31000					
Max. FAW (kg)	12000, [6000 (front axle) + 6000 (lift axle)]					
Max. RAW (kg)	19000					
Gearbox & Clutch						
Model	TATA GBS 750 6-speed					
Speed	6F + 1R					
Gear Ratios	1st - 9.19, 2nd - 4.98					
	3rd - 2.96, 4th - 1.93					
	5th - 1.39, 6th - 1.00					
	Rev - 8.128					
Clutch Type	Single Disc, Dry Friction Type, Booster-assisted					
Clutch Dia	380 mm Push Type, Area - 750 sq.cm					
Rear Drive Axle						
Type	Tata		Optional Twin Speed Meritor Axle (56WB only)			
	RA 109 RR					
Axle Ratio	6.14		6.21/4.56			
Lift Axle						
Pneumatic air suspension with automatic lifting and lowering depending on vehicle load						
Chassis & Suspension						
Size	285 x 65 x 7					
Type	Ladder type frame with rivetted/bolted cross members					
Front Suspension	Parabolic / Semi-elliptical in front Pneumatic Suspension at Lift Axle					
Rear Suspension	Bell-crank with Multi Leaf Spring					