

POWER PACKED PERFORMER

1212 LPK

Gold Class Tipper



Power of 6

- > **Power of Business Profit**
6.5 CuM tipper with front end tipping, Best in Class Mileage, Faster turn around time, Higher and synchronised service intervals
- > **Power of vehicle performance**
NG 3.3L engine with 92kW (125 Ps) power and 390 Nm torque @1000 – 2200 r/min band for better mileage and less gear shifting. Higher gradeability, Fail safe Air Brake with Auto slack adjuster, Proven GBS40 Gearbox with 7 mm Thick riveted/bolted chassis for longer vehicle life, higher uptime and best in class performance
- > **Power of driving comfort**
New Melba fabric's ergonomically designed adjustable seats, Less gear shifting and clutching efforts, Tilt & Telescopic power steering, Lower NVH and better suspension
- > **Power of convenience and connectivity**
Multi functional ergonomic cluster with GSA, Average Fuel Economy, DEF & other Indicators, Electric Tipping switch, Reverse parking assistance, white illuminated facia & key hole, Regeneration switch, Music system with fast USB charger etc
- > **Power of Value**
India's largest service and parts network, 3 years/3000 Hours vehicle warranty, TMGO and higher resale value
- > **Power of safety and security**
Safer all steel cabin, anti roll bar at front, Bigger 9x20 tyre, Strong tipper body & aggregates, Tata Sampoorna Seva 2.0, Tata Samartha

*Terms & Conditions Apply



Engine		Gear box	
3.3L NG BS6 Engine with 92kW (125Ps) power and 390 Nm torque @ 1000 – 2200 r/min		GBS40, Manual Synchromesh (5F +1R)	
Improved Low end torque with flatter torque over wider RPM band for better drivability and higher mileage		Lower Gear Shift Effort with optimized Gear Shift travel Gear Shift Advisor	
Clutch	Chasis	Axle	Brakes
330 mm Single plate dry friction type Low hysteresis clutch with high size clutch Booster to reduce the clutching efforts	Depth - 223 mm, Flange Width - 60 mm, Thickness - 7 mm (Ladder type heavy duty frame with riveted & bolted cross members)	Front Axle - Heavy duty forged I beam, reverse elloit type Rear Axle - Fully floating TATA RA109 RR (RAR – 6.833) Benjo typer heavy duty axle	Full Air S cam Brakes, brake drum Diameter – 410 mm

Advantage of Front End Tipping

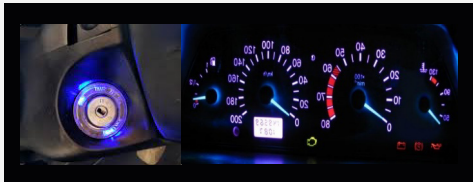
- Best in class tipping angle (48 degree +/- 5) and faster unloading
- Due to cylinder location at front, its easy to maintain at less maintenance cost
- Evenly distributed load for better stability and higher body life
- Better unloading leverage due to more distance between cylinder location and rear hinges
- Suitable for heavy duty applications
- No concentrated load on chassis and body like under body tipping

Key Features of 1212 LPK BS6



New Multifunction Instrument Cluster Features:

Average Fuel Economy
Digital DEF indicator
Gear Shift Advisor
Regeneration Indicator
Tell Tale Symbols



White Eliminated facia and Key hole
for easy accessibility in Night



Internal Connectivity -

Music System and
High Speed USB
Mobile Charger



Reverse Parking
Assistance

1212 LPK Tipper Body Features

Front Wall Assy
Head Board Thickness
- 3 mm, HS800 steel

Side wall Assy. ,RH
Side Board Thickness - 3 mm, HS800 steel

Floor Assy.
Floor Thickness - 3 mm, HS800 steel

Tailgate Assy.
Thickness - 3 mm,
HS800 steel

Stiffener Thickness
- 3 mm, HS800 steel

Side wall Assy. , LH
Side Board Thickness
- 3 mm, HS800 steel

3 Stage Painting process

- Shot Blasting Technology - For higher Paint and body life
- Rust proof



Best in class Melba Fabric
Seats adjustable as per
Weight and in XZ direction



Tilt and telescopic
Power Steering



Tipper Gradeability
Improvement (38.5%)



Sealed Wiring
Harness connectors



New 120 ah alternator



Electric switch
for tipping

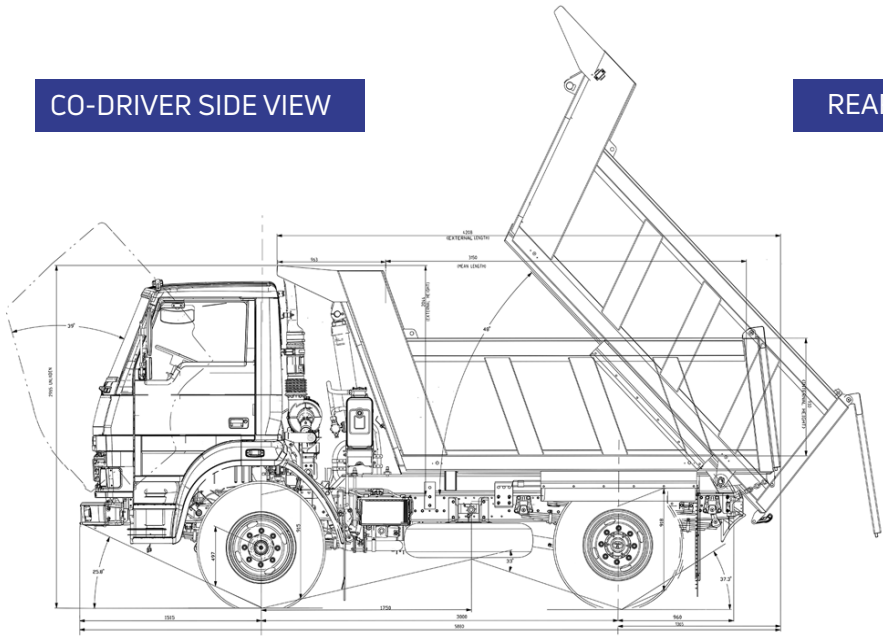
TECHNICAL SPECIFICATIONS

Model	1212 LPK
Engine	3.3L NG BS6 Engine
Power	92kW (125 hp) @ 2600 r/min
Torque	390Nm @ 1000 -2200 r/min
Exhaust System	DOC+DPF+SCR with Series Double Swirl Mixer with DEF Tank
Clutch	Single Plate Dry Friction Type, 330 mm
Gear Box	GBS-40 (5F + 1R Synchronesh) with Cable shift
Suspension - Front Type	Semi-Elliptical Leaf Spring with Hydraulic Double Acting Telescopic type Shock Absorber
Suspension - Rear Type	Semi-Elliptical Leaf Spring
Tyres	9 x 20 - 16PR
Cabin Type	Day Cab
Steering Type*	Tilt & Telescopic Power Steering (Dia-420 mm)
Brakes Type	Dual Circuit Full Air S" Cam Brakes With Auto Slack Adjuster (Drum - Drum)
Ground Clearance (mm)	245 mm
Gradeability	38.5%
Rear Axle Ratio	TATA RA 109RR Fully floating Benjo axle (RAR - 6.833)
Battery	12 V - 100 ah, Alternator - 120 ah
Fuel Tank Capacity (l)	120 l
Load Body Variants	Fully built Tipper, CBC
GVW (kg)	11990
FAW (kg)	4070
RAW (kg)	7920
Long member Size (mm) (LxBxH)	223mm x 60mm x 7mm
WB	3 000 mm
TCD (m)	11.2
Load Body Dimenssions (mm) (LxWxH)	3150X2252X930
Warranty	3 years/ 3000 hours

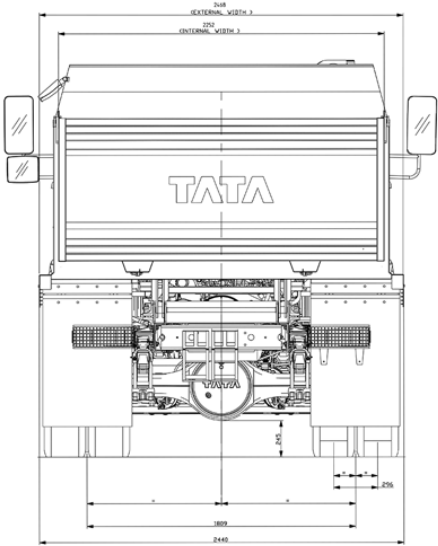
*Specifications are subject to change without prior notice. These are indicative photos, specifications for reference only.

*All dimensions are in mm

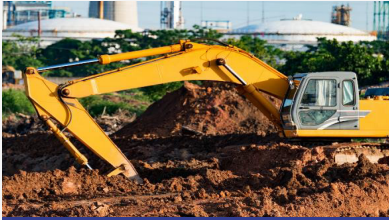
CO-DRIVER SIDE VIEW



REAR VIEW



Blue Metal, Construction Material



Soil, Earth



Small Stones



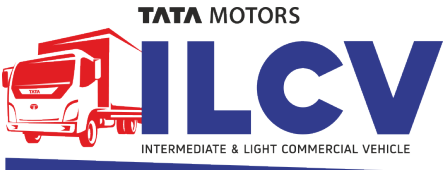
River Stone



Sand



Gypsum, Light Stones



TATA MOTORS

For more information, please visit our website: www.light-trucks.tatamotors.com
You can also contact our Sales Office: Tata Motors Limited, 4th Floor, Ahura Centre, 82, Mahakali Caves Road, MIDC, Andheri (East), Mumbai - 400 093 or call toll-free no. 1800 209 7979.

Terms & Conditions apply as per the policy of ITGI. Insurance available on light, intermediate & heavy commercial vehicles.
CAUTION: Accessories shown in the picture or elsewhere do not constitute standard fitment.
The specifications are merely indicative. Due to continuous product improvements, these specifications are liable to change without notice.

3-YEAR/3-LAKH KM WARRANTY

TATA NEW GENERATION TELEMATICS

TATA DELIGHT

TATA ZIPPY

TATA OK

TATA MOTORS

SAMPOORNA SEVA

AAPKE SAATH HAR KADAM

TOLL-FREE 1800 209 7979

TATA GENUINE PARTS

TATA SURAKSHA

TATA PROLIFE

TATA KAVACH

TATA ALERT