

## Technical Specifications

Model	1009g LPT	
Engine	3.8 SGI NA BS6 Engine	
Power	62kW (85 PS) @2500 r/min	
Torque	285 Nm @ 1200 – 1600 r/min	
Clutch	Single plate dry friction type – 280 mm dia	
Gear Box	GB 27 Gear Box (5F, 1R)	
Suspension - Front Type	Semi Elliptical Leaf Spring with Hydraulic Double Acting Telescopic Shock Absorbers	
Suspension - Rear Type	Semi-Elliptical Leaf Spring	
Tyres	8.25 R 16 - 16PR Radial Tyre (FR-2, RR-4, Spare -1)	
Cabin Type	Day Cab	
Steering Type*	Tilt & Telescope Power Steering (Dia - 420mm)	
Brakes Type	Dual Circuit Full Air S* Cam Brakes With Auto Slack Adjuster (Drum - Drum)	
Ground Clearance (mm)	217	
Gradeability	23.0%	
Rear Axle Ratio	TATA RA1055HD Fully Floating Benjo Axle (RAR - 4.571)	
Battery	12 V - 100 ah	
Fuel Tank Capacity (lt)	300l (150 x 2), 430l (150x2 + 65x2)	
Load Body Variants	Cab, CLB, High Deck, Container, Reefers	
GVW (kg)	9900	
FAW (kg)	3400	
RAW (kg)	6500	
Long member Size (mm) (LxBxH)	200mm x 60mm x 5mm	
WB	3800	4920
TCD (m)	13.5	17.5
Load Body Dimenssions HSD* (mm) (LxWxH)	5217mm x 2117mm x 1822mm (17ft)	6167mm x 2117mm x 1822mm (20ft)
Warranty*	3 years/ 3 lakh km	

\*Specifications are subject to change without prior notice. These are indicative photos, specifications for reference only.

\*All dimensions are in mm



## Applications



Parcel and Courier/  
E Commerce



Fruits and  
Vegetables



FMCG



Textiles



Dairy Products



Poultry



Water Tanker



Milk Containers

Maintenance Activity	Service Interval (km)
Engine oil	20000
T/M oil	120,000
Differential oil	120,000
Power steering oil	120,000
Coolant	180,000
Clutch oil	120,000
Hub grease Front	120,000
Hub grease Rear	120,000

For more information, please visit our website: [www.light-trucks.tatamotors.com](http://www.light-trucks.tatamotors.com)

You can also contact our Sales Office: Tata Motors Limited, 4th Floor, Ahura Centre, 82, Mahakali Caves Road, MIDC, Andheri (East), Mumbai - 400 093 or call toll-free no. 1800 209 7979.

Terms & Conditions apply as per the policy of ITGI. Insurance available on light, intermediate & heavy commercial vehicles.

CAUTION: Accessories shown in the picture or elsewhere do not constitute standard fitment. The specifications are merely indicative. Due to continuous product improvements, these specifications are liable to change without notice.

**TATA MOTORS**

3-YEAR/3-LAKH KM WARRANTY

**SAMPOORNA SEVA**

TATA NEW GENERATION TELEMATICS

TATA DELIGHT

TATA ZIPPY

TATA OK

TATA GENUINE PARTS

TATA SURAKSHA

TATA PROLIFE

TATA KAVACH

TATA ALERT

AAPKE SAATH HAR KADAM

TOLL-FREE 1800 209 7979

**TATA MOTORS**  
Connecting Aspirations



**MILLIONS OF MILES WITH SMILES**

1009g LPT - BS6

GO THE EXTRA MILES WITH CNG



Higher Mileage | Better Total Cost of Ownership | Best in Class Comfort

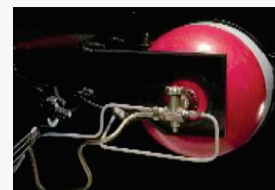


## KEY DIFFERENTIATORS



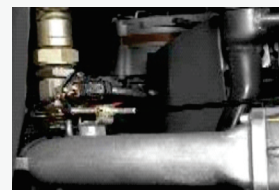
Coil-on-plug

Low maintenance and efficient electrical system  
High uptime with easy fault diagnosis system.



Swagelok Fittings

CNG cylinder valve with in-built pressure relief devices



Stepper Motor Ignition System

It ensures perfect gas-air mixing, maintenance free efficient operation



CATCON Temperature Indicator

Warning system (light & buzzer) - in case temperature inside catalytic converter exceeds 400 degree celsius, enhancing the safety



Slow & Fast Filling Points

User-friendly fast filling to ensure CNG filling at all the CNG stations.  
Slow filling points in order to avail access to most of the stations

## HIGH PRESSURE FILTER & SAFETY VALVES



Shutoff valve

ECE R110 standard high pressure shutoff (Solenoid) valve from OMB  
Auto cut-off for additional safety  
Corrosion resistant brass body  
CNG inlet filtering system



Cylinder Valve

Excess Flow Valve (EFV)  
Thermal Pressure Relief Device (TPRD)  
Vented gas carry away system  
Complies with ECE R110 standard



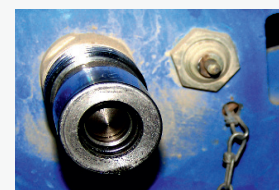
High Pressure Filter

ECE R110 compliant, rugged corrosion resistant high pressure aluminum filter from WEH Germany



Receptacle from WEH Germany:

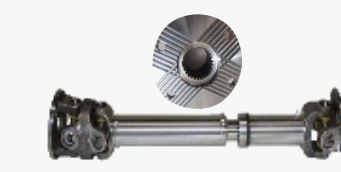
ECE R110 standard type TN5 low noise receptacle specifically designed for trucks refueling



Receptacle cap: The engine cannot be cranked with the receptacle cap open

## OTHER SAFETY COMPONENTS

## IMPROVED PRODUCT PACKAGE



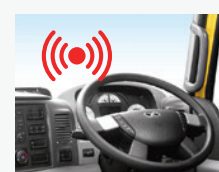
Serrated Coupling flange propeller shaft for better Reliability, Maintenance & to improve Power Transmission



New Multifunction Instrument Cluster Features:  
Average Fuel Economy, Trip A&B  
Gear Shift Advisor, Driver massage screen  
Tell Tale Symbols



Music system & blaupunkt speakers + USB fast charging

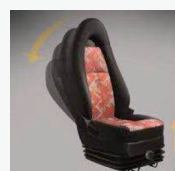


Reverse parking assistance



White illuminated facia

## IMPROVED DRIVERS' PACKAGE



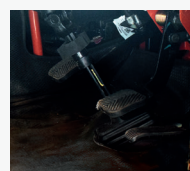
All weather proof Melba fabric seat with features like reclining, Sliding, and Height adjustable as per weight for best in class driving comfort



Tilt and telescopic Power Steering- Adjustable to any driver with respect to his height



Semi Elliptical Leaf Spring Suspension lower, cabin NVH with improved engine mount for enhanced cabin comfort



ABC Pedals: Improved Ergonomic pedal positions to reduce fatigue



Cabin Safety - safer all steel cabin with stronger build quality for better safety to the Driver

# EXPERIENCE THE POWER OF CHANGE

**BS6**  
THE POWER OF 6



**Power of Business Profit**



**Power of Vehicle Performance**



**Power of Driving Comfort**



**Power of Convenience & Connectivity**



**Power of Value**



**Power of Safety & Security**

## 1009g LPT

Introducing New 1009g LPT BS6 with Old Trusted & Proven 3.8SGI NA engine with Higher torque available at lower RPM for Best In class mileage and TCO.

Comes in 4 different variants in combination of 2 CNG Capacities (300L & 430L water capacity) and 2 load body options, 1009g LPT comes with 217mm Ground Clearance and 23% gradeability.

1009g LPT comes with lot of first in its segment features like Reverse parking Buzzer, GSA, Music system with Fast USB charger, fast and slow filling nozzles etc

It has got the world class safety components like Auto Shut off valve, High pressure filter, Refuelling interlock device, Electronic Viscous fan, Swagelok fittings for better safety and higher aggregate life.



## Axle



Front Axle - Heavy duty forged I beam, reverse elloit type

Rear Axle - Fully floating TATA RA1055HD (RAR - 4.57) Benjo type heavy duty axle

## Chasis



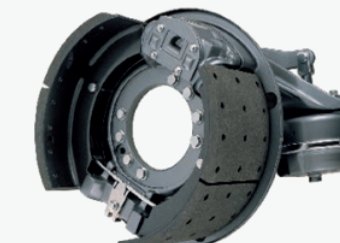
Depth - 200mm, Flange Width - 60mm, Thickness -5mm  
(Ladder type heavy duty frame with Riveted/boted cross members)

## Clutch



280mm Single plate dry friction type Low hysteresis clutch with high size clutch Booster to reduce the clutching efforts

## Brakes



Full Air S cam Brakes with Auto slack Adjuster & ABS, Brake drum diameter - 325 mm

## Engine



3.8L SGI NA BS6 Engine with 62kW (85Ps) power and 285 Nm torque @ 1200 - 1600 r/min

SGI Technology with Skip Fire Mode for Higher Mileage

## Gear Box



GB 27, Manual Synchromesh (5F +1R)

Lower Gear Shift Effort with optimized Gear Shift travel

Gear Shift Advisor